

# 5 Reasons your team should have SHORE



## 1 Seamlessly Streamline

Say goodbye to manual paperwork and embrace the digital era. With SHORE, you can effortlessly manage and track your entire industrial workflow. From inventory management to production schedules, our intuitive interface will keep your operations running smoothly.



## 2 Integrate and Connect

Unlock the power of connectivity! SHORE allows you to integrate seamlessly with your existing systems and equipment. From tracking inventory to machinery, you'll have real-time insights at your fingertips. Harness the potential of data-driven decision-making and propel your business forward.

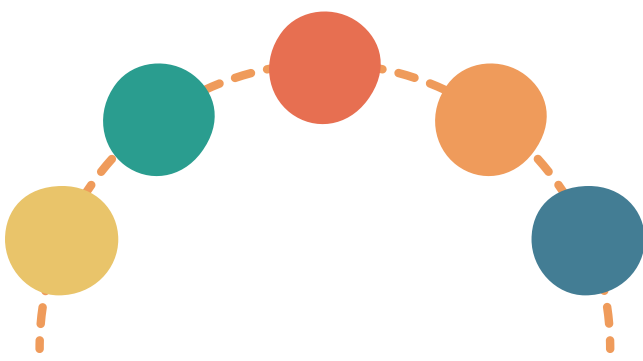
## 3 Analyze and Optimize

Dive deep into the ocean of data and unlock hidden patterns with our powerful analytics tools. Identify bottlenecks, optimize processes, and make informed decisions to maximize efficiency and productivity. With SHORE, you'll ride the wave of continuous improvement.



## 4 Unleash Efficiency

Enhance teamwork and collaboration like never before. SHORE's collaborative features allow your teams to communicate, share updates, and collaborate effortlessly. From managers to , everyone can ride the same wave towards success.



## 5 Secure and Scalable

Rest assured, your data is in safe hands. SHORE employs top-of-the-line security measures to protect your valuable information. SHORE uses Time-based One-Time Password (TOTP) Two-factor Authentication(2FA) at user login for an added layer of security.

